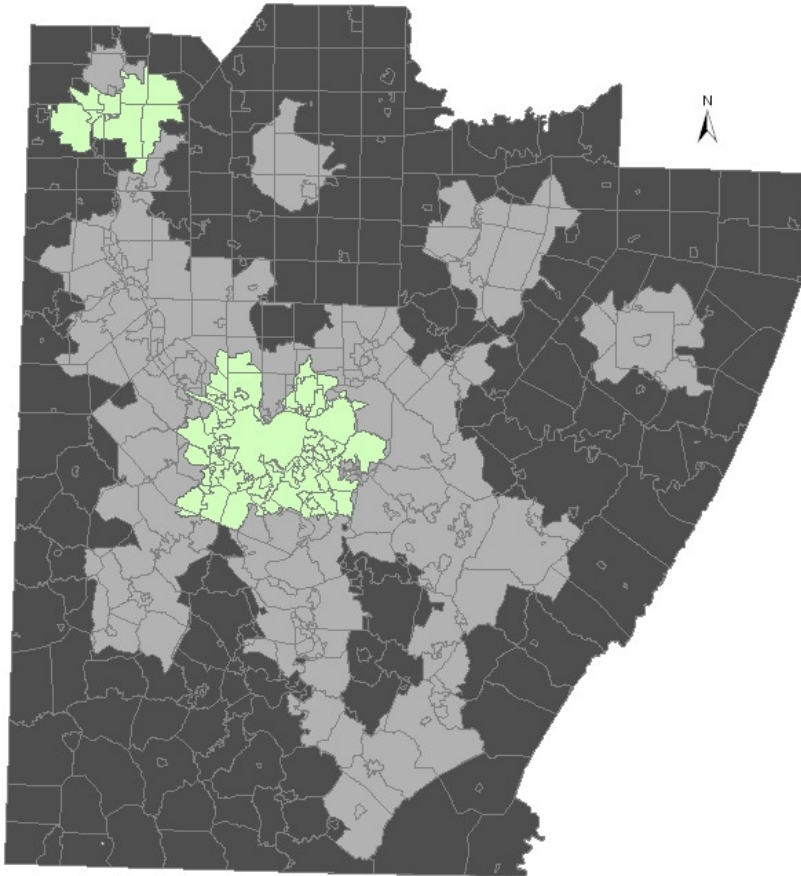


Testimony to the Pennsylvania House Transportation Subcommittee, Republican and Democratic Policy Committies

PennDOT Districts 11 and 12
Gateway High School; Monroeville, PA
June 18, 2010

Chris Sandvig – Project Manager, the GoBurgh Initiative
Pittsburgh Community Reinvestment Group
1901 Centre Ave, Suite 200
Pittsburgh, PA 15219
412-391-6732, x208
csandvig@pcrg.org

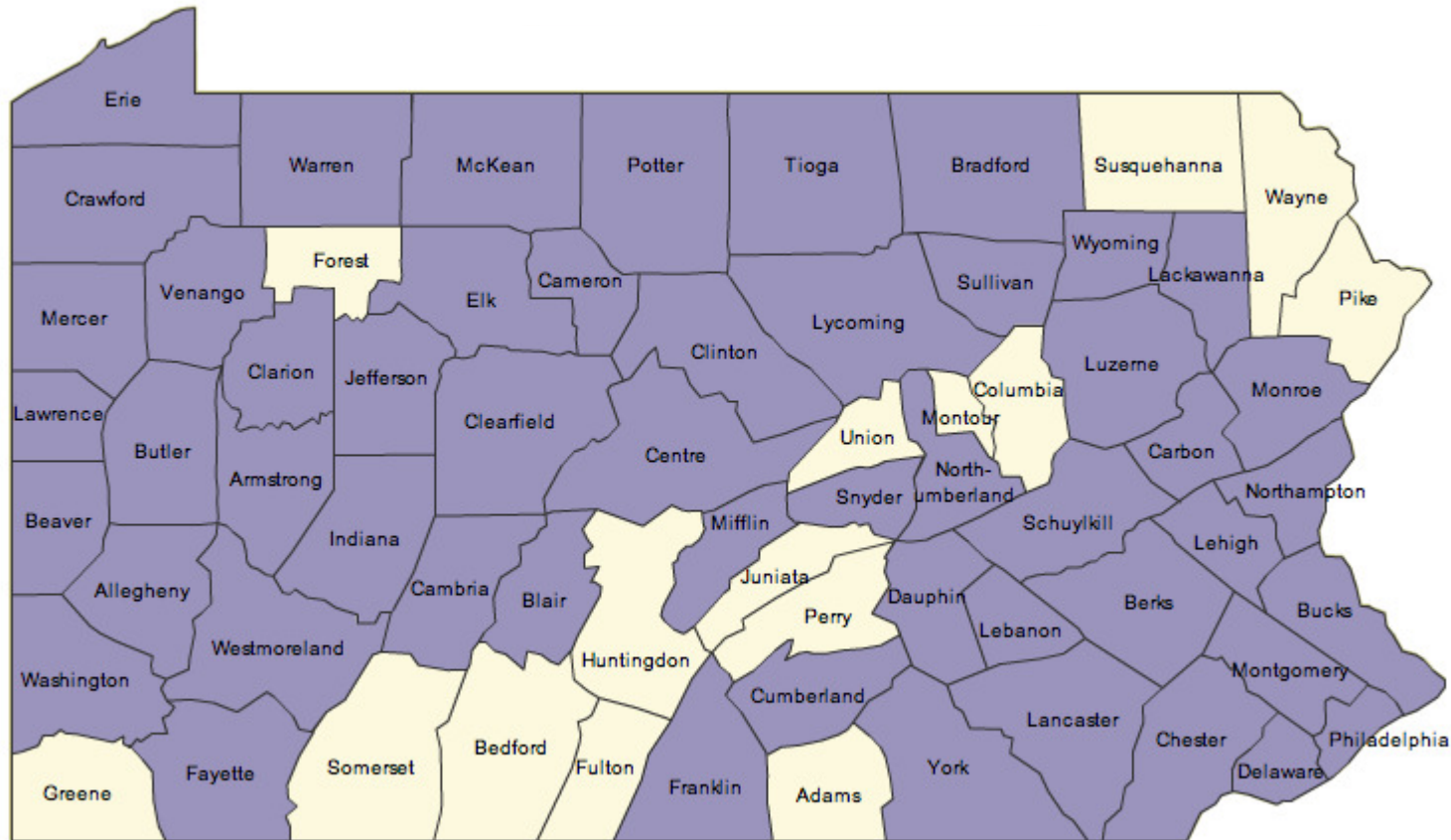
Southwestern PA is heavily reliant upon transit for our daily life



Pittsburgh Ranks:

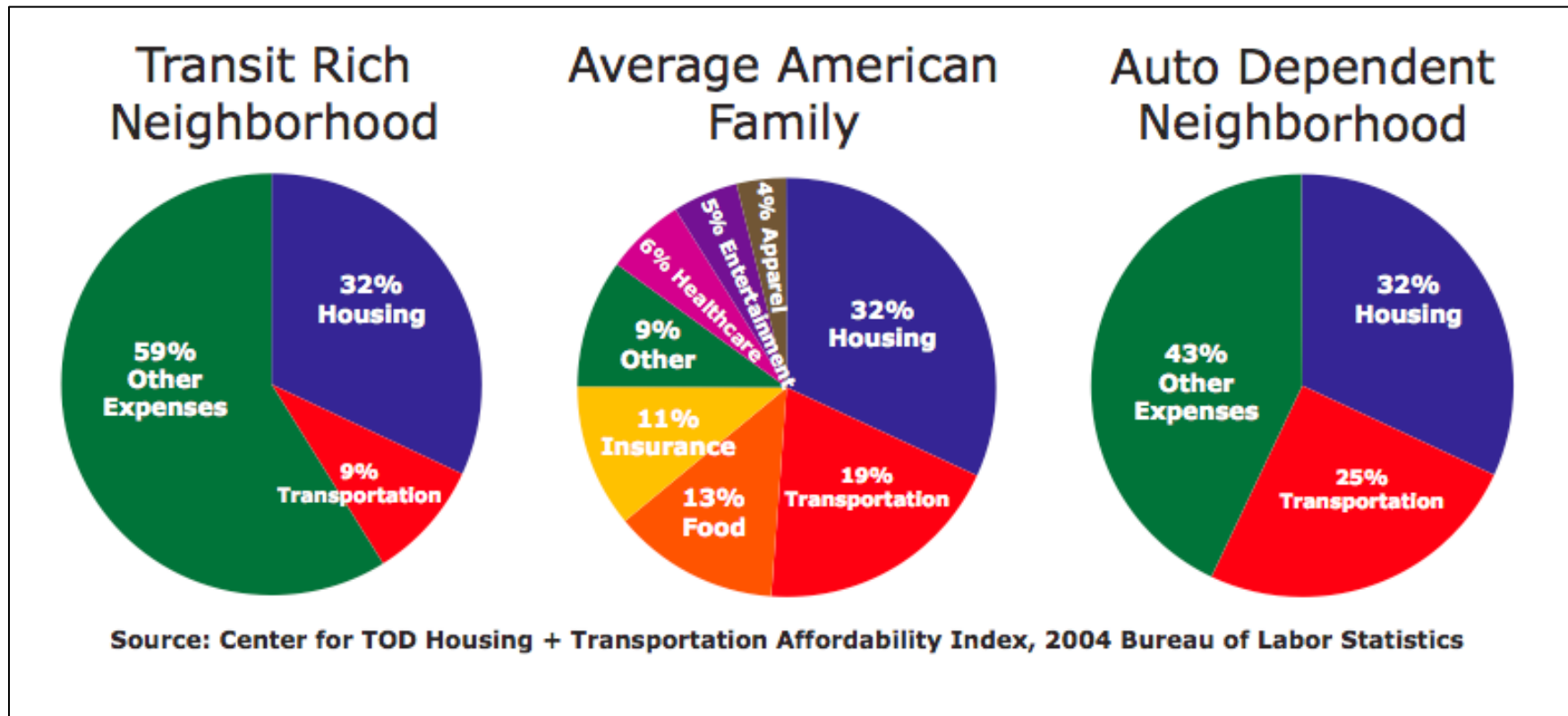
- 21st by metro population
- 17th by transit ridership
- 43rd by transit operating expenditure budget

51 Pennsylvania counties – 76% - rely on mass transit



Source: Bureau of Public Transportation, PennDOT

Affordable living isn't just about housing.



Pittsburgh transit riders save an average of **\$8,116** annually, per person, in transportation costs.

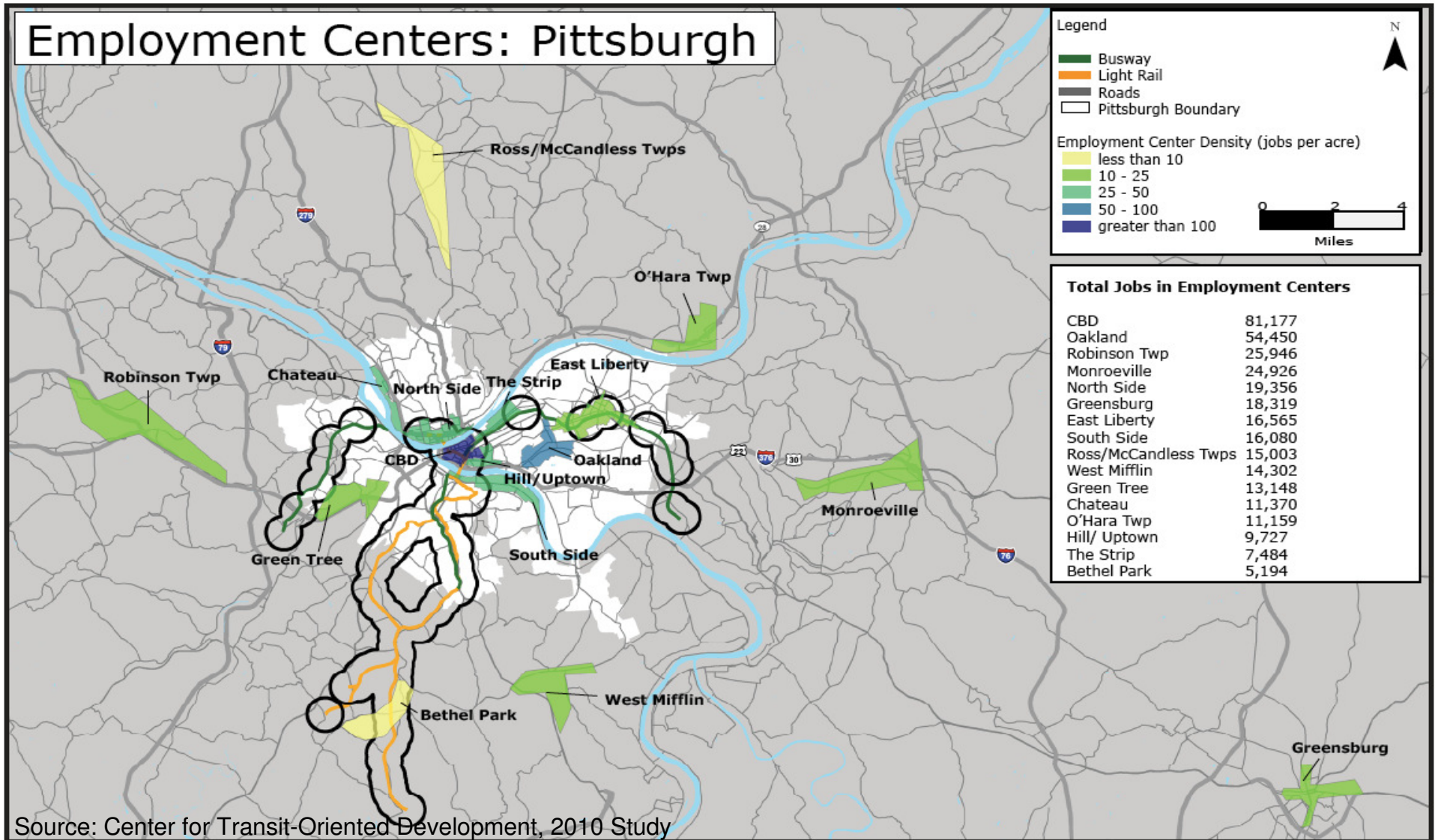
Cutting transit isn't good math... or economics

Transit Cuts from State Funding Gap:	\$50 million
Rider Reduction:	55,000
Cost to taxpayers:	\$420 million

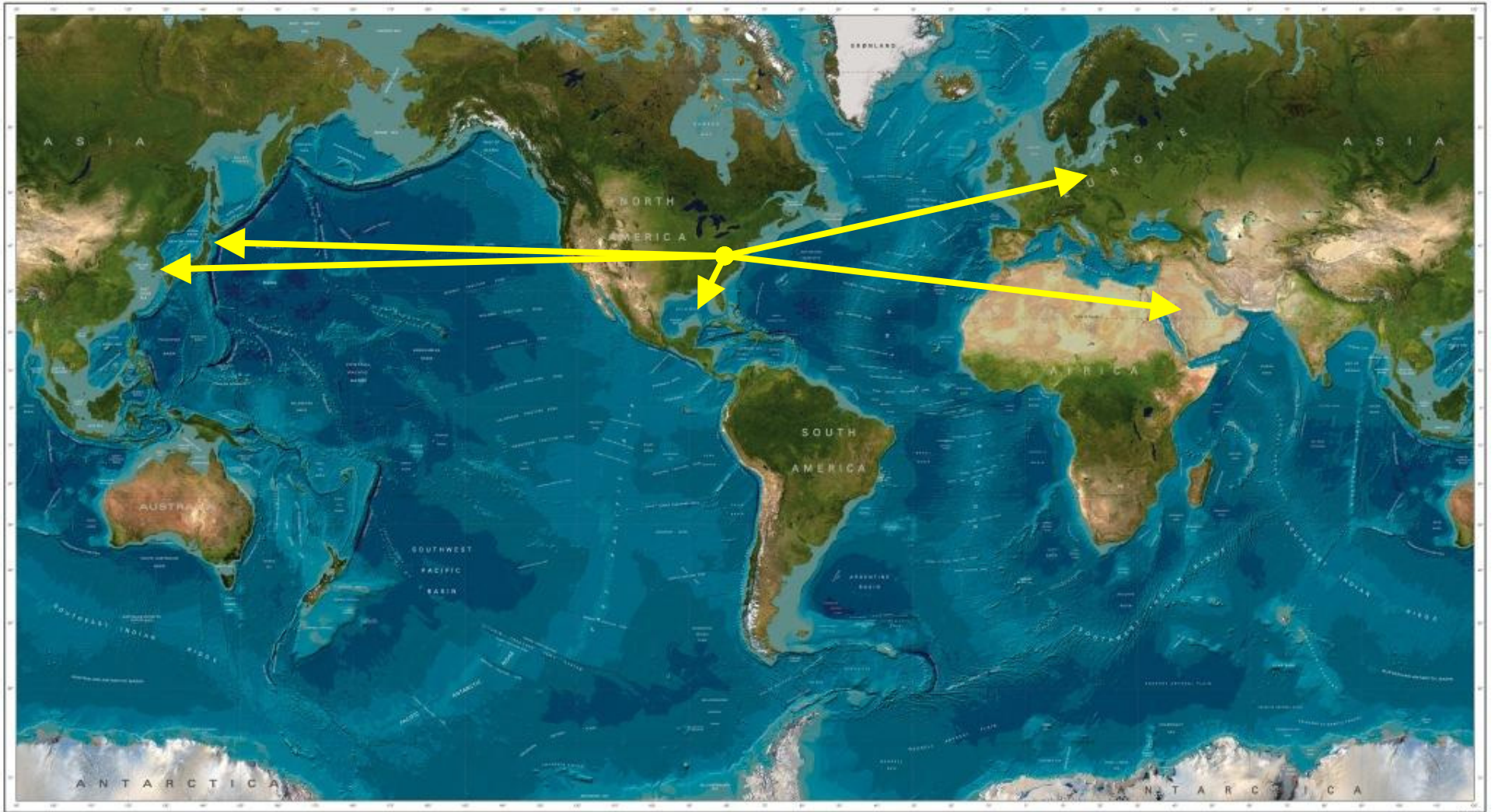
Question: who can afford an additional \$8,100/year in living costs?

Even in a household making \$100,000, that's an **8.1% increase** in cost of living.

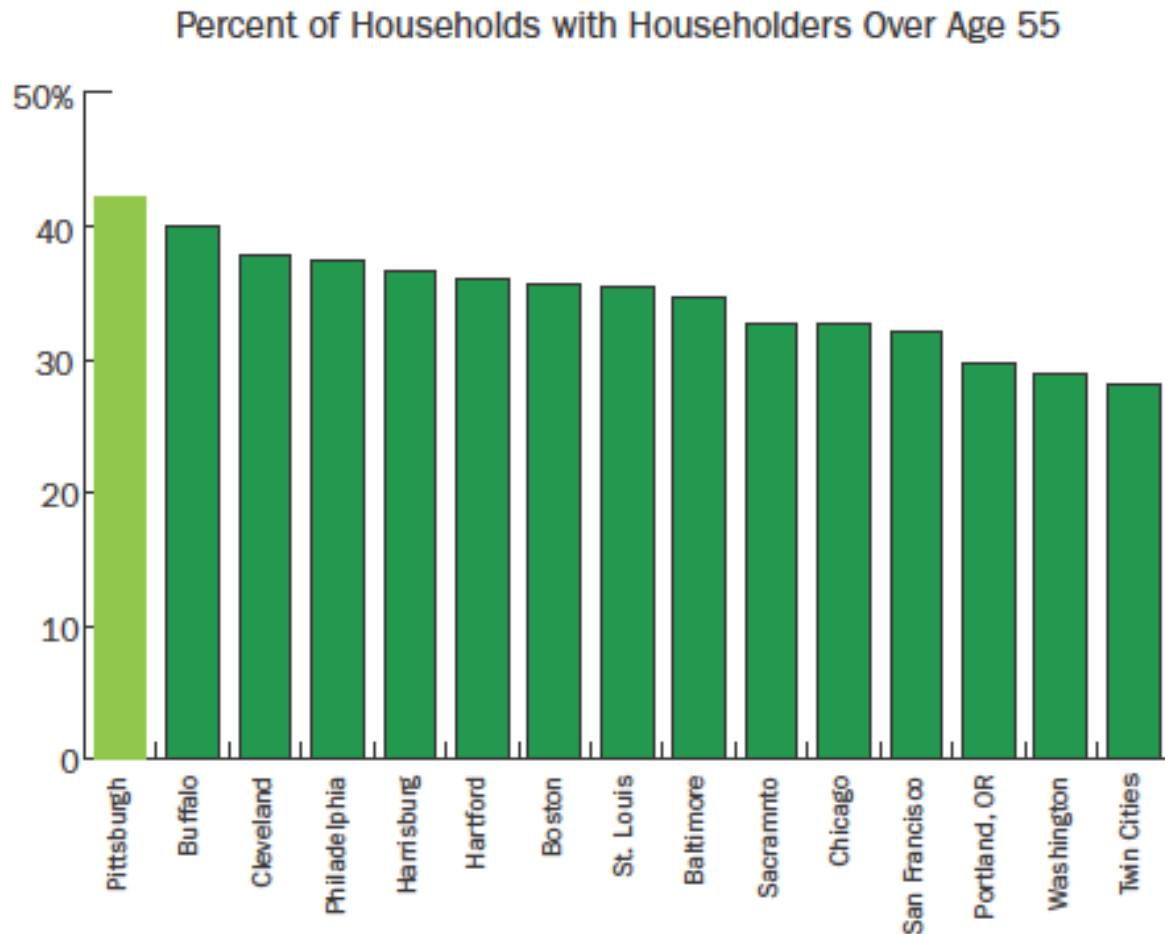
Downtown and Oakland have more jobs than all suburban centers combined. Without transit, will they stay in Pennsylvania??



**\$420 million more spent locally doesn't stay local –
it leaves the region and the country**



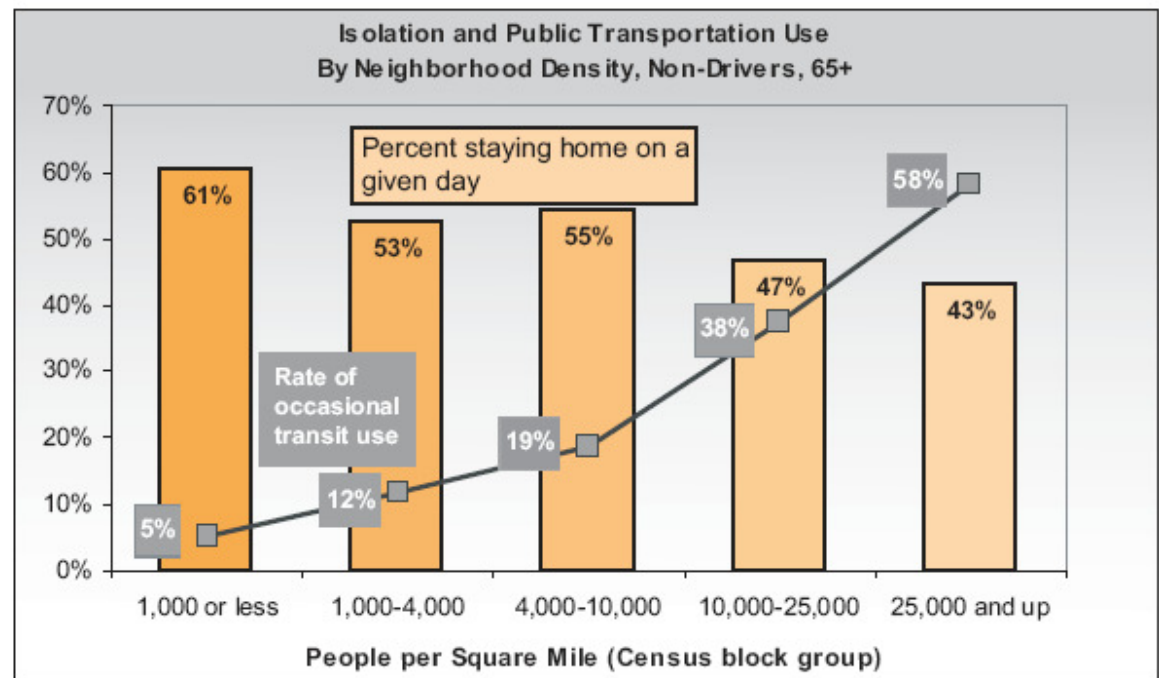
Pittsburgh is one of the nation's oldest cities...



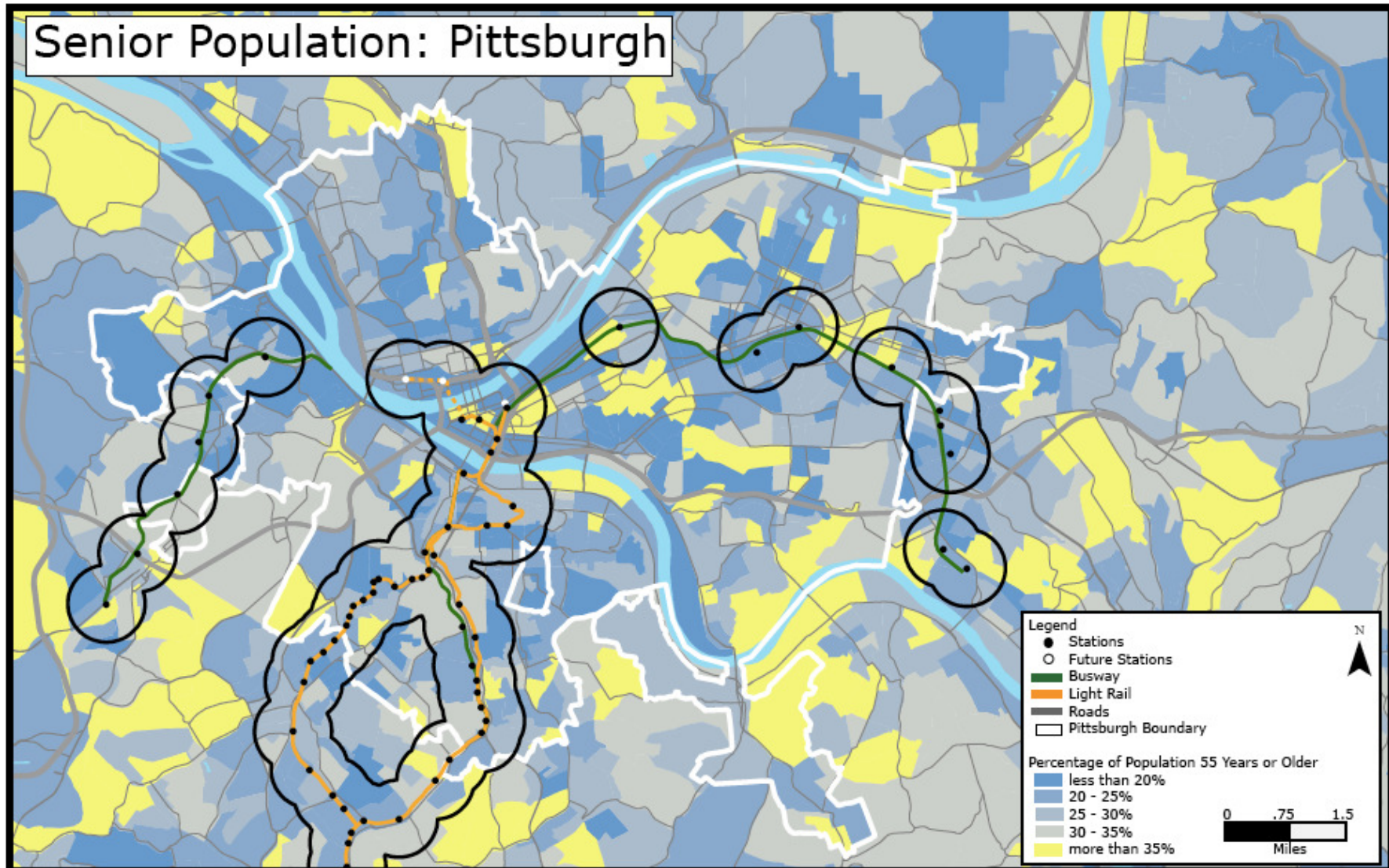
Almost HALF of Pittsburgh's households have residents over the age of 55, and that number is growing...

Compact communities and transit reduce isolation among non-driving residents

- In a 2005 AARP survey:
 - 25% of respondents gave their communities a D or F for offering amenities within walking distance
 - 1/3 of respondents said their communities fail to provide dependable public transportation
 - 71% of older households want to live within walking distance of transit



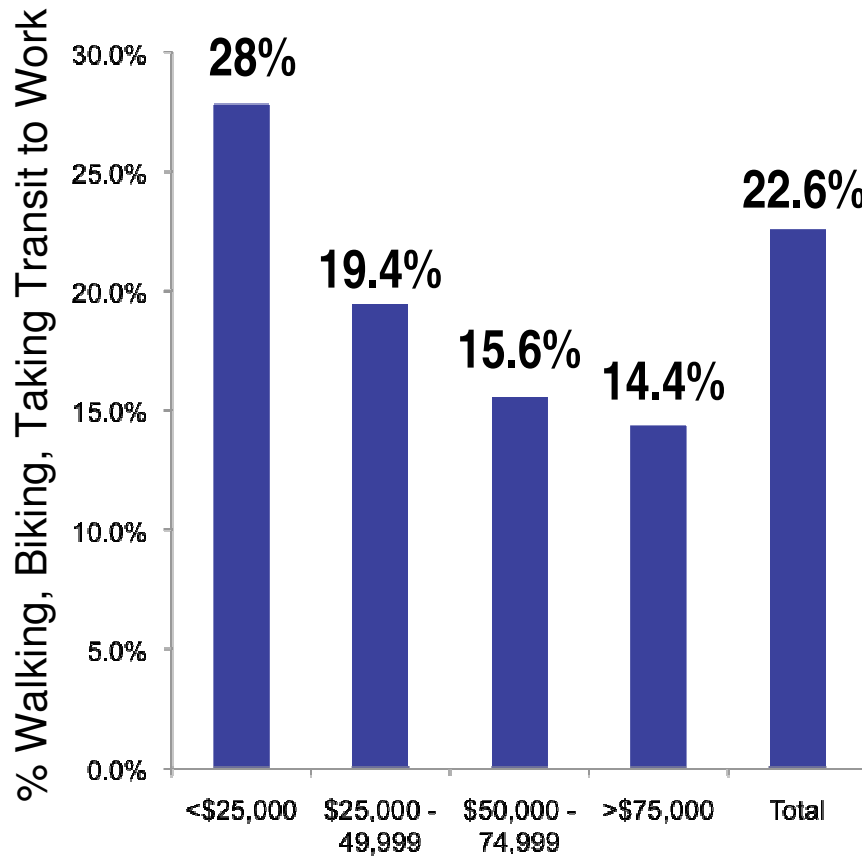
Pittsburgh's older households need to be connected to transit



Source: Center for Transit-Oriented Development, 2010 Study

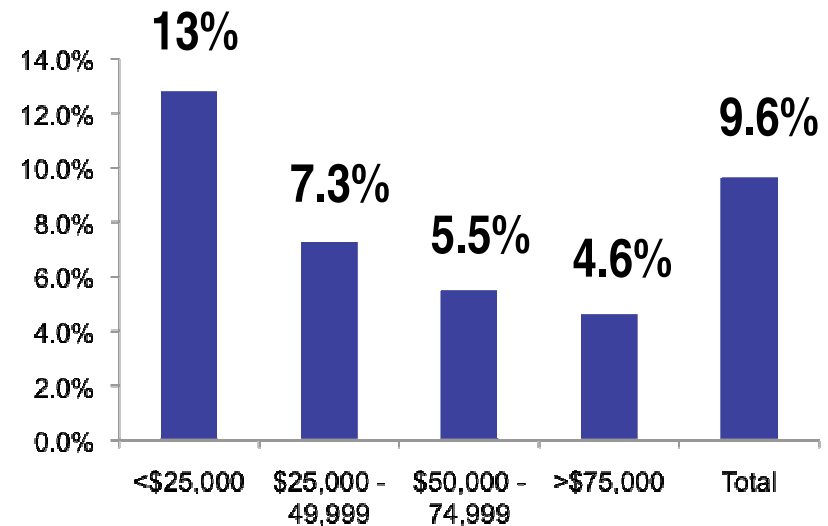
Pittsburgh's transit: it's for everyone

Pittsburgh Fixed Guideway Transit



Rates of non-auto commutes are more than double among workers who live near transit, but transit affects everyone.

Pittsburgh MSA



Thank you

Chris Sandvig – Project Manager, the GoBurgh Initiative
Pittsburgh Community Reinvestment Group
1901 Centre Ave, Suite 200
Pittsburgh, PA 15219
412-391-6732, x208
csandvig@pcrg.org